

US 92 PEDESTRIAN & BICYCLE COUNTS

Location: US 92 from Walker Ave to Ohio Ave

Weather: Sunny

Day/Date: 2/11/16

10-11 am	Bicycle	2		1	
	Pedestrian	3			1
11-12 pm	Bicycle	2			
	Pedestrian	1	1	2	2
12-1 pm	Bicycle				
	Pedestrian	1	8	2	1
1-2 pm	Bicycle				
	Pedestrian		4		1
3-4 pm	Bicycle		3	1	1
	Pedestrian	1	3	2	1
4-5 pm	Bicycle		1	3	1
	Pedestrian	1	4	2	1
5-6 pm	Bicycle		1		
	Pedestrian		4	1	1
6-7 pm	Bicycle	1		1	
	Pedestrian		3	1	3
7-8 pm	Bicycle				
	Pedestrian		1		2
8-9 pm	Bicycle				
	Pedestrian				1

N



10-11 am	Bicycle		3	2	1
	Pedestrian	3	3		4
11-12 pm	Bicycle		1		1
	Pedestrian		2		
12-1 pm	Bicycle		1	2	
	Pedestrian	1	5		4
1-2 pm	Bicycle		2		2
	Pedestrian	1	4		
3-4 pm	Bicycle	1	5		2
	Pedestrian	1	5	4	2
4-5 pm	Bicycle				1
	Pedestrian				1
5-6 pm	Bicycle		3		
	Pedestrian		10	1	4
6-7 pm	Bicycle		1	3	4
	Pedestrian		1		2
7-8 pm	Bicycle				
	Pedestrian	1	5	4	4
8-9 pm	Bicycle		1		1
	Pedestrian		1		

Top rows are the Southbound crossings
Bottom rows are the Northbound crossings

US 92 PEDESTRIAN & BICYCLE COUNTS

Location: US 92 from Ohio Ave to Texas Ave

Weather: Sunny

Day/Date: 2/11/16

10-11 am	Bicycle	1				
	Pedestrian	1		4		3
11-12 pm	Bicycle	2				
	Pedestrian	2		1		
12-1 pm	Bicycle	2				
	Pedestrian	3		2	1	
1-2 pm	Bicycle	1				
	Pedestrian	1	1	4	2	
3-4 pm	Bicycle	1		1		
	Pedestrian	2		3		
4-5 pm	Bicycle	2				
	Pedestrian	1		1	1	6
5-6 pm	Bicycle	1		1		2
	Pedestrian	3				
6-7 pm	Bicycle					
	Pedestrian	4		2		
7-8 pm	Bicycle	3				
	Pedestrian		1			
8-9 pm	Bicycle					3
	Pedestrian	1				4

N



10-11 am	Bicycle	3				5
	Pedestrian	1		5		
11-12 pm	Bicycle	2				
	Pedestrian	1		4		5
12-1 pm	Bicycle			1		1
	Pedestrian	1		4	1	
1-2 pm	Bicycle		1			
	Pedestrian		10	2		
3-4 pm	Bicycle	4				
	Pedestrian	2		2	1	
4-5 pm	Bicycle	2				
	Pedestrian	3		3	3	
5-6 pm	Bicycle	1				
	Pedestrian	4				
6-7 pm	Bicycle	2				
	Pedestrian	1		2		3
7-8 pm	Bicycle	1				
	Pedestrian	5				
8-9 pm	Bicycle		2			3
	Pedestrian					

Top rows are the Southbound crossings
 Bottom rows are the Northbound crossings

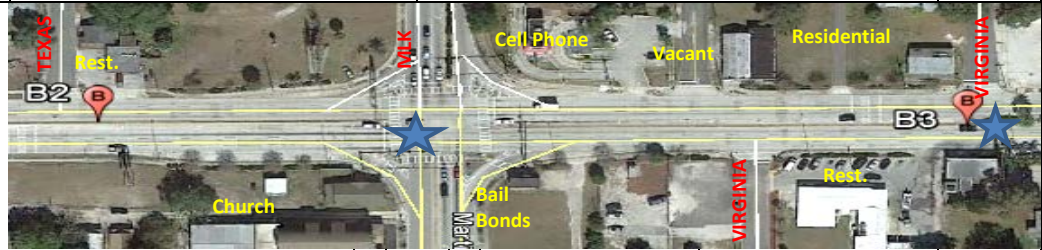
US 92 PEDESTRIAN & BICYCLE COUNTS

LOCATION: US 92 from Texas Ave to Virginia Ave

Weather: Sunny

Day/Date: 2/11/16

10-11 am	Bicycle		1	
	Pedestrian		3	1
11-12 pm	Bicycle			
	Pedestrian			
12-1 pm	Bicycle			
	Pedestrian			1
1-2 pm	Bicycle			
	Pedestrian		7	1
3-4 pm	Bicycle			1
	Pedestrian		5	
4-5 pm	Bicycle			1
	Pedestrian			2
5-6 pm	Bicycle		1	3
	Pedestrian			3
6-7 pm	Bicycle			2
	Pedestrian		1	
7-8 pm	Bicycle			
	Pedestrian			
8-9 pm	Bicycle			
	Pedestrian			



10-11 am	Bicycle		1	
	Pedestrian			2
11-12 pm	Bicycle	2		
	Pedestrian			
12-1 pm	Bicycle		3	1
	Pedestrian			3
1-2 pm	Bicycle		1	1
	Pedestrian		2	4
3-4 pm	Bicycle			
	Pedestrian		1	1
4-5 pm	Bicycle			
	Pedestrian		1	2
5-6 pm	Bicycle		1	3
	Pedestrian		1	1
6-7 pm	Bicycle			1
	Pedestrian			2
7-8 pm	Bicycle		1	3
	Pedestrian			
8-9 pm	Bicycle			
	Pedestrian			

Top rows are the Southbound crossings
Bottom rows are the Northbound crossings

US 92 PEDESTRIAN & BICYCLE COUNTS

LOCATION: US 92 from Virginia Ave to Florida Ave

Weather: Sunny

Day/Date: 2/11/16

10-11 am	Bicycle				
	Pedestrian		3		
11-12 pm	Bicycle				
	Pedestrian		1		
12-1 pm	Bicycle		1		
	Pedestrian		2		
1-2 pm	Bicycle		2		
	Pedestrian		1		
3-4 pm	Bicycle		1		
	Pedestrian		1		
4-5 pm	Bicycle		1		
	Pedestrian		1		
5-6 pm	Bicycle				
	Pedestrian				
6-7 pm	Bicycle				
	Pedestrian				
7-8 pm	Bicycle				
	Pedestrian				
8-9 pm	Bicycle				
	Pedestrian				



10-11 am	Bicycle		1		
	Pedestrian		3		
11-12 pm	Bicycle				
	Pedestrian		1		
12-1 PM	Bicycle				1
	Pedestrian		1		
1-2 PM	Bicycle				
	Pedestrian		5	2	2
3-4 pm	Bicycle				
	Pedestrian				
4-5 pm	Bicycle		2		
	Pedestrian				
5-6 pm	Bicycle				
	Pedestrian		3		
6-7 pm	Bicycle				
	Pedestrian			2	2
7-8 pm	Bicycle				
	Pedestrian				
8-9 pm	Bicycle				
	Pedestrian				

Top rows are the Southbound crossings
 Bottom rows are the Northbound crossings

US 92 PEDESTRIAN & BICYCLE COUNTS

LOCATION: US 92 from Florida Ave to Kentucky Ave

Weather: Sunny

Day/Date: 2/11/16

10-11 am	Bicycle				1
	Pedestrian		1		2
11-12 pm	Bicycle		1		
	Pedestrian		1		3
12-1 pm	Bicycle		1		1
	Pedestrian		1		1
1-2 pm	Bicycle				1
	Pedestrian		2		3
3-4 pm	Bicycle		1		1
	Pedestrian		2		3
4-5 pm	Bicycle		1		
	Pedestrian		2		4
5-6 pm	Bicycle		1		
	Pedestrian		1		2
6-7 pm	Bicycle				
	Pedestrian		1		1
7-8 pm	Bicycle				
	Pedestrian		2		3
8-9 pm	Bicycle				
	Pedestrian				

N



10-11 am	Bicycle				
	Pedestrian		1		2
11-12 pm	Bicycle		1		
	Pedestrian				4
12-1 pm	Bicycle				
	Pedestrian			1	6
1-2 pm	Bicycle				1
	Pedestrian		3		1
3-4 pm	Bicycle		1		
	Pedestrian		1		5
4-5 pm	Bicycle				
	Pedestrian		2		3
5-6 pm	Bicycle		1		
	Pedestrian		2		
6-7 pm	Bicycle				
	Pedestrian		1		2
7-8 pm	Bicycle				
	Pedestrian		1		
8-9 pm	Bicycle		1		
	Pedestrian		1		2

Top rows are the Southbound crossings
 Bottom rows are the Northbound crossings

US 92 PEDESTRIAN & BICYCLE COUNTS

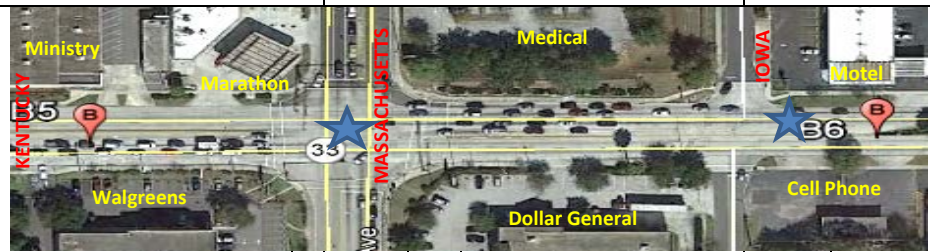
LOCATION: US 92 from Kentucky Ave to Iowa Ave

Weather: Sunny

Day/Date: 2/11/16

10-11 am	Bicycle		2	
	Pedestrian	1	4	2
11-12 pm	Bicycle	1		
	Pedestrian	2	5	
12-1 pm	Bicycle			
	Pedestrian	1	3	
1-2 pm	Bicycle	1	1	
	Pedestrian		8	
3-4 pm	Bicycle	1		
	Pedestrian	2	8	
4-5 pm	Bicycle		1	
	Pedestrian	1	2	
5-6 pm	Bicycle			
	Pedestrian		3	1
6-7 pm	Bicycle			
	Pedestrian	1	2	6
7-8 pm	Bicycle			
	Pedestrian		4	3
8-9 pm	Bicycle			
	Pedestrian		2	

N



10-11 am	Bicycle			
	Pedestrian	3	3	
11-12 pm	Bicycle			
	Pedestrian	1	3	
12-1 pm	Bicycle		2	1
	Pedestrian	1	7	1
1-2 pm	Bicycle			
	Pedestrian		5	
3-4 pm	Bicycle			
	Pedestrian	1	3	
4-5 pm	Bicycle			
	Pedestrian	2	1	2
5-6 pm	Bicycle		1	
	Pedestrian		2	1
6-7 pm	Bicycle			1
	Pedestrian		8	2
7-8 pm	Bicycle	1		
	Pedestrian	1	8	
8-9 pm	Bicycle			
	Pedestrian		1	

Top rows are the Southbound crossings
 Bottom rows are the Northbound crossings

US 92 PEDESTRIAN & BICYCLE COUNTS

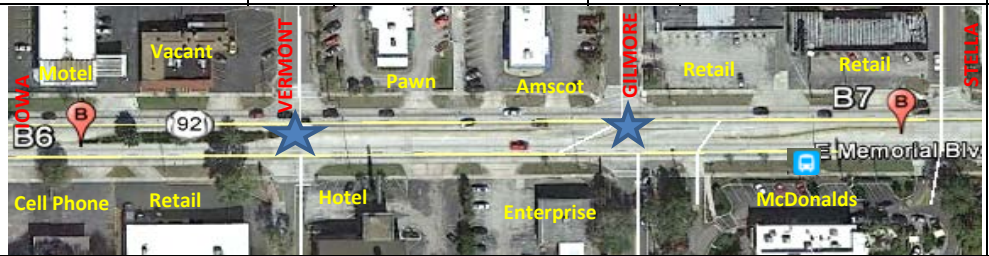
LOCATION: US 92 from Iowa Ave to Stella Ave

Weather: Sunny

Day/Date: 2/11/16

10-11 am	Bicycle		2	1
	Pedestrian	2	3	13
11-12 pm	Bicycle			2
	Pedestrian	2	5	11
12-1 pm	Bicycle	1		6
	Pedestrian	1	5	12
1-2 pm	Bicycle			4
	Pedestrian	3	5	14
3-4 pm	Bicycle	1	2	6
	Pedestrian	1	7	12
4-5 pm	Bicycle		2	7
	Pedestrian	1	5	19
5-6 pm	Bicycle			7
	Pedestrian	1	4	12
6-7 pm	Bicycle			11
	Pedestrian		4	21
7-8 pm	Bicycle			5
	Pedestrian			10
8-9 pm	Bicycle			4
	Pedestrian			11

N



10-11 am	Bicycle		2	5
	Pedestrian	1	8	12
11-12 pm	Bicycle		2	4
	Pedestrian	5	2	7
12-1 pm	Bicycle	1		6
	Pedestrian	4	4	15
1-2 pm	Bicycle		1	10
	Pedestrian	2	3	15
3-4 pm	Bicycle		2	7
	Pedestrian	1	8	15
4-5 pm	Bicycle		1	5
	Pedestrian	7	7	18
5-6 pm	Bicycle	1		10
	Pedestrian	3	4	16
6-7 pm	Bicycle		1	11
	Pedestrian	2	8	21
7-8 pm	Bicycle			10
	Pedestrian	2	2	11
8-9 pm	Bicycle	1		7
	Pedestrian			8

**Top rows are the Southbound crossings
Bottom rows are the Northbound crossings**

US 92 PEDESTRIAN & BICYCLE COUNTS

LOCATION: US 92 from Stella Ave to Lakeshore Dr

Weather: Sunny

Day/Date: 2/11/16

10-11 am	Bicycle			3			
	Pedestrian			3			
11-12 pm	Bicycle						
	Pedestrian						
12-1 pm	Bicycle						
	Pedestrian						
1-2 pm	Bicycle						
	Pedestrian			2			
3-4 pm	Bicycle						
	Pedestrian			7			
4-5 pm	Bicycle						
	Pedestrian			20			
5-6 pm	Bicycle						
	Pedestrian						
6-7 pm	Bicycle			6			
	Pedestrian						
7-8 pm	Bicycle						
	Pedestrian			1			
8-9 pm	Bicycle						
	Pedestrian						

N



10-11 am	Bicycle						
	Pedestrian			2			
11-12 pm	Bicycle						
	Pedestrian						
12-1 pm	Bicycle						
	Pedestrian						
1-2 pm	Bicycle			1			
	Pedestrian			3			
3-4 pm	Bicycle						
	Pedestrian			3			
4-5 pm	Bicycle						
	Pedestrian			8			
5-6 pm	Bicycle						
	Pedestrian			10			
6-7 pm	Bicycle			2			
	Pedestrian			8			
7-8 pm	Bicycle			1			
	Pedestrian						
8-9 pm	Bicycle						
	Pedestrian						

**Top rows are the Southbound crossings
Bottom rows are the Northbound crossings**

US 92 PEDESTRIAN & BICYCLE COUNTS

LOCATION: US 92 from Lakeshore to Town Center Entrance

Weather: Sunny

Day/Date: 2/11/16

10-11 am	Bicycle	5	3	5	
	Pedestrian	6			
11-12 pm	Bicycle	6			
	Pedestrian				
12-1 pm	Bicycle				
	Pedestrian	3	8		
1-2 pm	Bicycle		3	3	
	Pedestrian	4	6		
3-4 pm	Bicycle	7	6	15	
	Pedestrian	15	25	20	
4-5 pm	Bicycle	12		10	
	Pedestrian	15	31	32	
5-6 pm	Bicycle	3	4		
	Pedestrian	10	24	10	
6-7 pm	Bicycle	12	13		
	Pedestrian	3	15	2	
7-8 pm	Bicycle	2		3	
	Pedestrian	8	7	3	
8-9 pm	Bicycle	5	3	10	
	Pedestrian	11		3	

N



10-11 am	Bicycle	2		7	
	Pedestrian	9	4	9	
11-12 pm	Bicycle	5	8	12	
	Pedestrian	4	2	6	
12-1 pm	Bicycle	3	2		
	Pedestrian	20	16	11	
1-2 pm	Bicycle	5	6		
	Pedestrian	6	5	5	
3-4 pm	Bicycle	15	20	10	
	Pedestrian	12	35	22	
4-5 pm	Bicycle				
	Pedestrian	15	15		
5-6 pm	Bicycle		30	12	
	Pedestrian	15	25	8	
6-7 pm	Bicycle	4	8		
	Pedestrian	12	10		
7-8 pm	Bicycle	2	11	13	
	Pedestrian	15		10	
8-9 pm	Bicycle	5			
	Pedestrian	3			

Top rows are the Southbound crossings
 Bottom rows are the Northbound crossings

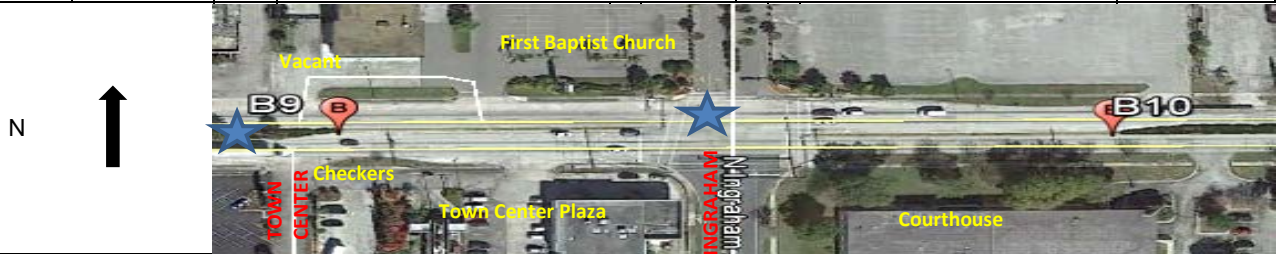
US 92 PEDESTRIAN & BICYCLE COUNTS

LOCATION: US 92 from Town Center to Ingraham

Weather: Sunny

Day/Date: 2/11/16

10-11 am	Bicycle	2		
	Pedestrian			
11-12 pm	Bicycle			
	Pedestrian	4		
12-1 pm	Bicycle			
	Pedestrian			
1-2 pm	Bicycle			
	Pedestrian	3		
3-4 pm	Bicycle			
	Pedestrian	8		
4-5 pm	Bicycle	6		
	Pedestrian			
5-6 pm	Bicycle	3		
	Pedestrian	14		
6-7 pm	Bicycle			
	Pedestrian	14		
7-8 pm	Bicycle	5		
	Pedestrian	3		
8-9 pm	Bicycle			
	Pedestrian	6		



10-11 am	Bicycle	1		
	Pedestrian	6		8
11-12 pm	Bicycle	2		
	Pedestrian	3		
12-1 pm	Bicycle			
	Pedestrian			
1-2 pm	Bicycle			
	Pedestrian	5		2
3-4 pm	Bicycle			
	Pedestrian	5		
4-5 pm	Bicycle	4		
	Pedestrian			
5-6 pm	Bicycle			
	Pedestrian	12		1
6-7 pm	Bicycle	14		
	Pedestrian			
7-8 pm	Bicycle	2		
	Pedestrian	10		1
8-9 pm	Bicycle	2		
	Pedestrian			

Top rows are the Southbound crossings
 Bottom rows are the Northbound crossings